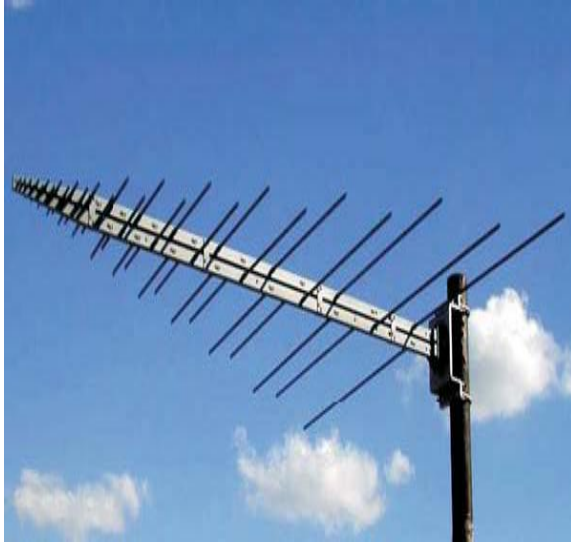


SPECIFICATIONS:

Frequency range	30 – 300 MHz
VSWR	< 2.0:1 over 90% of frequency range
Feed power handling	500 W
Nominal input impedance	50 Ω
Connector	N-type female
Gain	5 dBi over 90% of frequency range
E-plane 3 dB beamwidth	70°
H-plane 3 dB beamwidth	120°
Polarisation	Linear (vertical or horizontal)
Mechanical:	
Dimensions (l x w)	2.5 m long, 5.3 m wide
Weight	22 kg including bracket
Materials	Aluminium elements and boom. Stainless steel fasteners. Tufnol insulators.
Mounting method	Back bracket for pole 100 – 180 mm
Environmental :	
Wind speed operational	160 km/h
Wind survival	200 km/h
Temperature operational	-20 °C to +55 °C
Water and dust resistance	IP66



PRODUCT DESCRIPTION:

The 30 to 300 MHz log-periodic dipole array (LPDA) is a general purpose wideband transmitting and receiving antenna. It can be used as a spectrum monitoring antenna. It is also used for EMC emission and susceptibility testing.

Designed for low and stable VSWR, high-power handling, the antenna radiates effectively over its frequency range. It has a DC short circuit for lightning protection and antenna sense.

PRODUCT FEATURES:

- Compact design
- Low VSWR
- Vertical or horizontal polarisation
- Wide frequency range
- Fast assembly with no tools
- Elements fit neatly into a carry bag
- Proven, rugged design
- DC Short circuit